

Prism coupling as a non destructive tool for optical characterization of (Al,Ga) nitride compounds

E. Dogheche, B. Belgacem, D. Remiens, P. Ruterana^{1*} and F. Omnes**

Laboratoire des Matériaux Avancés Céramiques (LAMAC) - Université de Valenciennes et du Hainaut-Cambrésis - Le Mont-Houy BP211 Valenciennes Cedex F-59342

*Laboratoire d'Etude et de Recherche sur les Matériaux (LERMAT - CNRS), ISMRA Bd Maréchal Juin, Caen Cedex F-14050

**Centre de Recherche sur l' Hétéroépitaxie et ses Applications (CRHEA - CNRS), rue Bernard Gregory Sophia-Antipolis, Valbonne F-06560

^{1*} Author for correspondence: ruterana@lermat8.ismra.fr, Fax: 33 231 4526 60

ABSTRACT

An optical characterization technique is proposed for GaN based compounds deposited on sapphire. In AlGa_N films grown by MOCVD, the film optical behavior and the substrate to layer interface are qualified from the measured optical data. The experimental and theoretical approach used for this purpose is described in detail. The results clearly show bending effects at the interface which may be related to structural defects; a good agreement with transmission electronic microscopy analysis is obtained.

INTRODUCTION

There is currently an increasing interest in the growth of high quality nitride related materials for fabrication of short-wavelength devices for displays [1-2]. This has been initiated by use low temperature buffer layers (AlN or GaN) [1]. Until now, most of the studies for the group III nitrides have dealt with the improvement of films quality, the characterization of physical properties has become an integral part of research for the understanding of material behavior and performance under operating conditions. Numerous accurate tools as transmission electronic microscopy (TEM) [3], scanning probe microscopy (SCM) [4] techniques are largely used for the qualification of the layers. Furthermore, the increasing need of feedback informations has spurred the development of original characterization methods. In the following, the high sensitivity of prism coupling for the characterization of the interface properties is demonstrated.

EXPERIMENTAL

The AlGaIn films were grown on (0001) sapphire substrates at a low pressure using a metalorganic vapor phase epitaxy (MOVPE) apparatus. A low-temperature AlN nucleation layer of thickness 10nm was first deposited on sapphire at 800°C. Growth temperature of the active layers was carried out at 1170°C. Details of the growth procedure were published elsewhere [5].

The optical properties of AlGaIn / AlN heterostructures were measured by using a guided-wave technique based of the prism coupling. This technique was described in details by Tien et al [6]. In short, a He-Ne laser beam emitting at a wavelength of 632.8nm is coupled into the AlGaIn layer using a rutile prism (TiO₂) through the evanescent field in the air-film gap. By measuring the reflected intensity versus the angle of incidence α , we draw the guided-mode spectrum of the samples (figure 1). With the optical axis normal to the surface, the ordinary and extraordinary modes are respectively excited using transverse electric (TE) and transverse magnetic (TM) polarized light.

The same layers were examined by transmission electron microscopy using cross section samples prepared in the conventional way of mechanical polishing followed by ion milling.

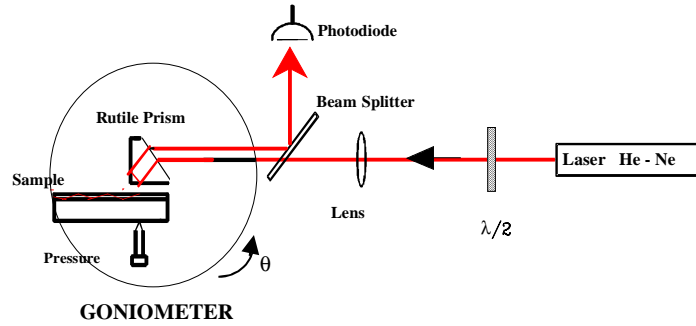


Figure 1 Experimental set up of the prism coupling method

RESULTS

In the TE mode spectrum of the AlGaIn films, six sharp reflectivity dips are observed at certain angles α which correspond to the excitation of guided modes (figure 2). These can be identified as the modes TE₀ – TE₅. Note that six modes have been excited with the TM polarized light. From the angular position of the TE or TM guided-modes, the corresponding effective mode indices are calculated according to

$$N_m = N_p \sin \left[A_p - \arcsin \left(\frac{\sin \alpha}{N_p} \right) \right] \quad (1)$$

where N_p is the refractive index of the prism, α is the angle of incidence and A_p is the prism angle with respect to the normal.

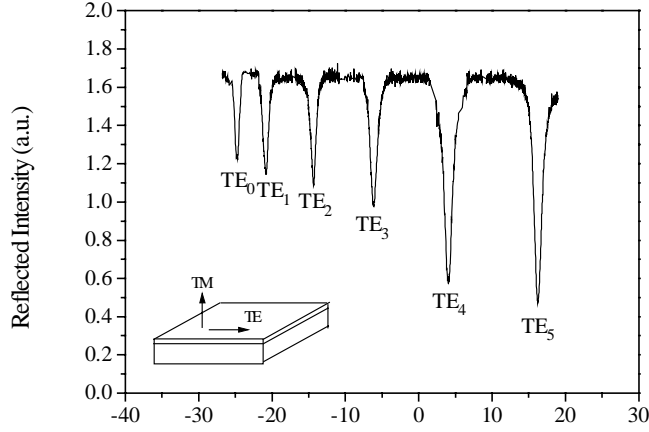


Figure 2 TE coupling curve of the laser beam into epitaxial $Al_xGa_{1-x}N$ films.

Using the calculation procedure reported by Ulrich and Torge [7], the ordinary refractive index (n_o) of AlGa_xN has been determined as 2.3240 ± 0.004 at 632.8nm. The extraordinary refractive index (n_e) obtained from the TM mode data is 2.3648 ± 0.006 . The calculated thickness is 1.2 ± 0.01 μm in agreement with the SEM observations.

In order to investigate the film homogeneity in the whole thickness and at the interface, we have reconstructed the refractive index profiles of samples. The approach based on the inverse WKB method usually associated with Wentzel, Kramers and Brillouin, was employed. This method was first proposed by J.M. White [8] to study the propagation characteristics of single crystal LiNbO₃ waveguides, and then improved by K.S. Chiang [9] for Cu diffused MgO film waveguides. From the knowledge of effective mode indices, the index profile $n(x)$ can be determined by solving the following characteristics equation for m^{th} order mode given by

$$2k \int_0^{x_i(m)} \sqrt{n(x)^2 - N(m)^2} dx = 2m\pi + 2\phi_a + 2\phi_s \quad (2)$$

where $n(x)$ and Nm are respectively the refractive index profile and the effective index of m^{th} order mode, $x_i(m)$ is defined as the “ turning point ” according to

$$n [x_i(m)] = N(m) \quad (3)$$

Generally, we assumed that the phase shift ϕ_s at the surface is taken as $\pi/4$ and ϕ_a is approximated to $\pi/2$ at the turning point as given by K.S. Chiang *et al* [9]. This method was described in detail by Dogheche *et al* [10].

From the angular position of modes given in figure 2, the effective mode indices was calculated. The reconstructed refractive index profiles of various samples prepared under optimized process conditions was investigated. As shown in figure 3, a non-abrupt film-substrate interface is observed.

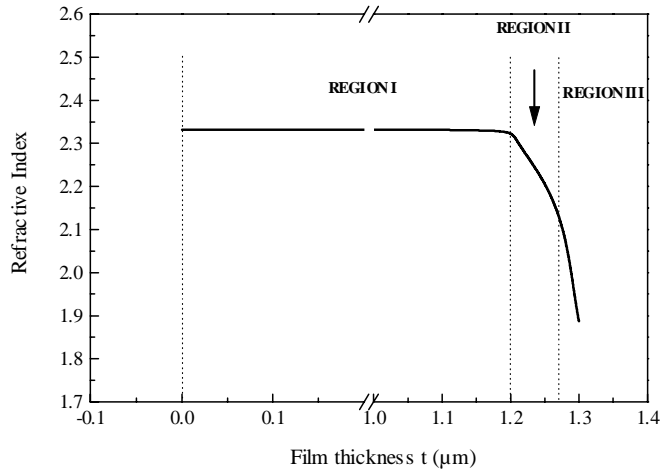


Figure 3 Refractive index profile from a 1.2 μm thick AlGaIn thin film using an improved inverse WKB method

Reconstruction of index profiles was investigated for various samples prepared under optimized process conditions. The profile was obtained from the analysis of the TE modes. Figure 3 displays the evolution of the ordinary refractive index as a function of the layer thickness. Three distinct regions are observed. First, the index of refraction is maximum at the film surface (index $n_0 = 2.3240$) and remains constant within the guiding region I. This behavior is synonymous of a homogeneous layer along the whole thickness. Further, in the region III, the index decreases rapidly near the substrate surface. These two regions are observed commonly for step-index thin film structures. In our case, an additional region II is observed in the profile $n(x)$, we denoted a two-time decrease of the index profile. The occurrence of fluctuations in the profile and the change in the shape near the substrate surface are indicative of a problem in the growth process. The region II illustrates the existence of a disturbed layer which appeared near the film-substrate interface. In fact, during the early stage of growth, many defects are introduced into the film, which can lead to the islanding and columnar growth. This behavior results in

large deterioration of the crystal structure at the interface. In the present study, the interface containing defects manifests itself through the changes of the optical properties of samples. As a consequence, the index of refraction is lowered in the region near the interface. The curve plotted figure 3 shows a thickness of around 60nm where the index profile $n(x)$ is modified, it may related to the extent of this disturbed region. The optical study of interface properties by the reflectivity technique was also described by Shokhovets *et al* [11] for GaN grown on GaAs. In this work, the observed defects are a consequence of the mixing of GaN and GaAs. A thin interlayer with a refractive effective index below that of GaN was found. It was explained as the presence of voids in the interface region which lowers the refractive index in the mixed zone.

The same AlGaIn films were analyzed by transmission electron microscopy (TEM). In fact, the growth of AlGaIn films is strongly dependent on the quality of the buffer layer. During the early stages of the growth, many defects are introduced into the film which can lead to islanding and columnar growth. This behavior may result in large deterioration of the crystal structure at the interfaces, leading to high-quality and low-dislocations heteroepitaxial films. The $\langle 1010 \rangle$ dark field observations show a mosaic growth, which is more less pronounced depending on the samples. As noticed in figure 4, (0002) weak beam images show a highly defective interfacial layer extends to 60nm, instead of the initial 10nm thickness of the aluminum nitride buffer layer. This area contains also a high density of dislocation loops. The density of dislocation loops decreases drastically beyond the interfacial layer of 60nm.

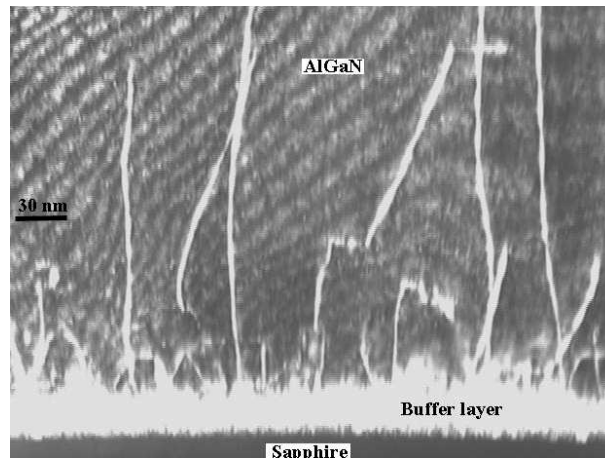


Figure 4 Cross-sectional 0002 weak beam image of a AlGaIn layer grown on sapphire with a 10nm thick-AlN nucleation layer.

This mechanism can be compared to the model of the buffer layer efficiency as proposed by Nakamura et al [12], where a low-temperature buffer layer of 50nm was estimated to give rise to highly defective layer of 150nm called a semi sound zone. In our case, this zone is confined to the first 60nm. This could be probably one explanation for the refractive index behavior as shown in figure 3.

CONCLUSION

In conclusion, using a combination of optical characterizations and transmission electron microscopy (TEM) analysis, it is shown that the growth properties of AlGa_xN / AlN heterostructures on sapphire can be investigated. A non-destructive prism coupling optical characterization was carried out to determine the waveguide mode informations, i.e. effective mode indices, which are treated through an original iWKB formalism to reconstruct the refractive index profile along the film thickness. There was an evidence of bending effects at the AlGa_xN/AlN buffer layer interface, extending in a thickness of 60nm. This area correspond exactly to the highly defective layer at the interface which appears to modify the index profile n(x). The results reveal the prospect of determining the relationship between structural and optical properties as a function of composition x for Al_xGa_{1-x}N.

REFERENCES

1. H. Amano, N. Sawasaki, I. Akasaki, Y. Toyoda, Appl. Phys. Lett. **48**, 353 (1986)
2. S. Nakamura, T. Mukai, M. Senoh : Appl. Phys. Lett. **64**, 1687 (1994)
3. F.A. Ponce, J.C. Major, W.E. Plano, D.F. Welsh , Appl. Phys. Lett. **65**, 2302 (1994)
4. Ö. Aktas, W. Kim, Z. Fan, A. Boktarev, A. Salvador, S.N. Mohammad, B. Sverdlov, H. Morkoç, Electron. Lett. **31**, 1389 (1995)
5. F. Omnes, N. Marengo, B. Beaumont, P. de Mierry, F. Caille, E. Monoz, J. Appl. Phys. **86**, 5286(1998)
6. P.K. Tien, S. R. Sanseverino, and R.J. Martin, Phys. Lett. **14**, 503 (1974)
7. Ulrich, R. Torge, Appl. Opt. **12**, 2901 (1973)
8. J.M. White and P.F. Heidrich, Appl. Opt. **15**, 151(1973)
9. K.S. Chiang, J. Light. Technol. **LT-3**, 385(1985)
10. E. Dogheche, B. Belgacem, D. Rémiens, P. Ruterana, F. Omnes: Appl. Phys. Lett. **75**, 3309 (1999)
11. S. Shokhovets, R. Goldhahn, V. Cimalla, T.S. Cheng, C.T. Foxon, J. Appl. Phys. **84** 1561 (1998)
12. S. Nakamura and G. Fasol, The blue laser diode-GaN based light emitters and lasers, Springer Verlag Publishers, Heidelberg (1997)